

SUMMER/FALL 2025

# RJ's Construction Supplies BUILD PRO



## KEEP COOL ON THE JOBSITE

Page 4



### Fall Protection for Concrete

Seal your project with confidence. Page 12



Safety you can feel! Page 15



Order Online!

## RJ's PROLINEUP

Serving professional builders since 2009

### CONSTRUCTION MATERIALS

Concrete and asphalt products, sand and gravel, lumber products, concrete forming, decorative concrete, pre-cast products, shotcrete, masonry, grouts, rebar, and wire mesh.

### FASTENERS AND ANCHORS

Simpson Strong-Tie, fasteners, anchors, fastening pins and inserts screws, staples, toggle bolts, rivets, bolts, washers, nails and nuts.

### ADHESIVES AND SEALANTS

Adhesives, sealants, caulks, epoxy, glues and cements, tape, dispensing guns, strapping, thread, backer rods, and gasket sealants.

### SAFETY AND PROTECTIVE EQUIPMENT

Fall protection, head, face, eye and ear protection, gloves, rainwear and workwear, emergency preparedness kits, cooling and heating packs, lifting equipment, spill control, signage.

### HAND TOOLS

Hammers, wrenches, screwdrivers, files, cutting tools, drywall and plastering tools, electrical tools, sockets and bits, clamps, masonry, concrete, and tile tools.

### INDUSTRIAL EQUIPMENT AND SUPPLIES

Industrial pumps, industrial raw materials, equipment, power transmission products, lubrication, oil, grease, shop vacuums.

### SURFACE PREPARATION AND FINISHING

Sanding discs and belts, sandpaper, polishing, sanding hand pads and sponges, rubbing bricks, specialty abrasives.

### A Partnership Built On Trust.

RJ's Construction Supplies provides professional contractors with the tools and services to enhance productivity, efficiency, and jobsite safety. We offer top brands and materials for the professional contractor that streamline operations and help grow your business.

### POWER TOOLS AND ACCESSORIES

Saws, grinders, demolition hammers, nail guns, pressure washers, generators, air and pneumatic tools, vacuum pumps, shop vacs, and supplies.

### PLUMBING AND WATERPROOFING

Plumbing supplies, waterproofing membranes, water stops, sealants and coatings, bituminous membranes, vapor barriers, weatherproof covers, tarps.

### STRUCTURAL AND FRAMING SUPPLIES

Structural hardware, connectors, lateral systems, tilt-up supplies, anchors, form clamps, bond breakers.

### MEASURING AND TESTING

Electrical power testing, laser level accessories, leveling rods, surveying equipment, telephone line testing, temperature and humidity measuring, non-electrical properties testing.

### LANDSCAPE AND HARDSCAPE

Outdoor products, erosion control, trench drains, tiles and detectable warning pads, pavers, lighting and lighting supplies.

### FORMING AND DECORATIVE CONCRETE

Form ties, forming accessories, shoring, and formwork, admixtures, stamping tools, deck coatings, brickform texture mats, stencils.

### STORAGE AND ORGANIZATION

Bucket bags and tool organizers, jobsite boxes, truck boxes, rolling and tool cabinets, portable tool boxes and chests.





# BUILDPRO UPDATE

KEEPING YOUR COOL ON THE JOB!



*Having procedures in place to deal with a heat alert includes postponing non-urgent work, increasing crew size at each site, increasing rest times, reminding workers to hydrate, and monitoring heat at each site - including work and rest areas. At RJ's, we care about the safety of our customers and their crews. Getting the job done should never come at the cost of someone's health.*

If your jobsite places you anywhere throughout Southern California, you know the heat doesn't mess around.

Triple-digit temps, dry winds, and relentless sun can hit hard by mid-morning — and by afternoon, your crew's at risk of more than just discomfort. Heat stress, dehydration, and sun exposure can seriously impact your team's safety, decision making, and output.

Slowdowns, mistakes, and injuries caused by heat are completely preventable — and keeping your crew cool and hydrated is one of the smartest and most cost-effective safety decisions you can make.

That's why RJ's stocks the gear pros trust when SoCal turns up the heat.

Our **Overtime™ Electrolyte hydration mix** is packed with the right blend of electrolytes to help replenish what's lost through sweat — no sugar crash-es, just clean, sustained hydration.

Combine that with our **Igloo® heavy-duty water jugs**, made to take a beating while keeping water ice-cold for hours.

We also stock wide-brim **straw hats** for lightweight sun protection and of course, **bottled water** - the most important tool to keep safe.

Protect yourself and your crews by recognizing the warning signs. Learn the seven symptoms of heat exhaustion, download printable infographics, and access more resources at: [www.osha.gov/heat](http://www.osha.gov/heat).

WHERE EVERY  
ORDER IS A  
PRIORITY!

# TOMAHAWK

NEW AT RJ's!

GAS POWERED, PORTABLE INVERTER GENERATORS



## Tomahawk 2000 Watt Generator

**Power:** 2.5 HP.  
**Voltage:** 120V.  
**Amperage:** 20A (120V).  
**Running Amperage:** 18 Amp.  
**Tank Capacity:** 1.1 gal.  
**Run Time:** 8 hrs @1/2 load.  
**Weight:** 52 lbs.



## Tomahawk 3000 Watt Generator

**Power:** 5 HP.  
**Voltage:** 120V.  
**Amperage:** 20A (120V).  
**Running Amperage:** 28 Amp.  
**Tank Capacity:** 1.1 gal.  
**Run Time:** 8 hrs @1/2 load.  
**Weight:** 53 lbs.



## Tomahawk 4500 Watt Generator

**Power:** 159 cc.  
**Voltage:** 120V  
**Amperage:** 20A (120V)  
**Running Amperage:** 37.5A  
**Tank Capacity:** 1.6 gal.  
**Run Time:** 9 hrs @1/4 load.  
**Weight:** 58 lbs.



## Tomahawk 5500 Watt Generator

**Power:** 312cc.  
**Voltage:** 120V.  
**Amperage:** 20A (120V).  
**Running Amperage:** 41.7 (120v outlet).  
**Tank Capacity:** 3.6 gal.  
**Run Time:** 8 hrs @1/2 load.  
**Weight:** 122 lbs.



## Tomahawk 9000 Watt Generator

**Power:** 458cc.  
**Voltage:** 120V/240V.  
**Amperage:** 20A(120V) 30A(120V/240V) 50A(120V/240V).  
**Running Amperage:** 75A (120V Outlet).  
**Tank Capacity:** 6.9 gal.  
**Run Time:** 14.5 hrs @1/4 load.  
**Weight:** 233 lbs.



## Tomahawk Delivers!

For the hard-working professionals who love to work hard and play hard the Tomahawk Inverter Generator is your go-to power solution. Designed for demanding job sites and remote locations, this industrial-grade generator delivers reliable, robust power with its high-performance engine and advanced inverter technology.

An **inverter generator** is a type of generator that produces clean, stable electricity by converting raw power into usable, high-quality power — suitable even for sensitive electronics like laptops and smart-phones. With fuel-saving technology for extended run times and super quiet operation, it's efficient and ideal for noise-sensitive areas.

Its compact, lightweight design and ergonomic handle make it easy to transport, while parallel capability allows for increased power output when needed. Safety features like GFCI outlets, overload protection, and low oil shutdown ensure smooth operation.



ROTARY HAMMERS & ANGLE GRINDERS



XGT® 40V | 80V

CORDLESS SYSTEMS

LXT® 18V | 36V

40V MAX XGT®  
BRUSHLESS 2-Pc.  
COMBO KIT!

SKU# MAKGT200D

40V Max XGT® Hammer Driver Drill 1/2"  
40V Max XGT® Impact Driver 4 Speed  
40V Max XGT® Battery 2.5 Ah  
40V Max XGT® Rapid Optimum Charger



XGT

40V MAX XGT® Brushless  
Rear Handle 10-1/4" Circular  
Saw Kit AWS® Capable  
SKU# MAKGSR02M1



XGT

40V MAX XGT® Brushless  
Rear Handle 7-1/4" Circular  
Saw Kit  
SKU# MAKGSR01M1



XGT

40V MAX XGT® Brushless  
1-9/16" SDS-MAX ATV  
Rotary Hammer Kit  
AFT®, AWS® Capable  
SKU# MAKGRH05M1



XGT

40V MAX XGT® Brushless  
1-1/8" SDS-PLUS ATV  
Rotary Hammer (D-Handle) Kit  
AFT®, AWS® Capable  
SKU# MAKGRH07M1



XGT

40V MAX XGT® Brushless  
6-1/2" Circular Saw  
AWS® Capable  
SKU# MAKGSH05Z



XGT

40V MAX XGT® Brushless  
4-1/2"/>" Paddle Switch Angle  
Grinder w/Electric Brake  
SKU# MAKGAG03Z



XGT

40V MAX XGT® Brushless  
AVT® Orbital Recipro Saw  
SKU# MAKGRJ02Z



XGT

40V MAX XGT® Brushless  
Blower  
SKU# MAKGBU01Z



LXT BRUSHLESS

18V LXT® Brushless  
2-pc. Combo Kit  
SKU# MAKXT297T



LXT BRUSHLESS

18V LXT® Brushless  
2-pc. Combo Kit  
SKU# MAKXT269M



36V (18V X2) LXT® Brushless  
Rear Handle 7-1/4" Circular  
Saw Kit with 4 Batteries  
SKU# MAKXSR01PT1



LXT BRUSHLESS

18V LXT® Brushless 6-1/2"  
Circular Saw  
SKU# MAKXSH03Z



LXT BRUSHLESS

18V LXT® Brushless  
Quick-Shift Mode™ 4-Speed  
Impact Driver  
SKU# MAKXDT20Z



LXT BRUSHLESS

18V LXT® Brushless  
3-Speed Impact Driver  
SKU# MAKXDT14Z



LXT BRUSHLESS

18V LXT® Brushless  
1/2" Hammer Driver-Drill  
SKU# MAKXPH14Z



LXT BRUSHLESS

18V LXT® Brushless  
High-Torque 1/2" Impact  
Wrench  
SKU# MAKXWT08Z



LXT BRUSHLESS

18V LXT® Brushless  
Recipro Saw  
SKU# MAKXRJ05Z



LXT

18V LXT® Recipro Saw  
SKU# MAKXRJ04Z



LXT BRUSHLESS

18V LXT® Brushless  
Jig Saw  
SKU# MAKXVJ04Z



LXT BRUSHLESS

18V LXT® Brushless 1"  
SDS-Plus Rotary Hammer  
SKU# MAKXRH01Z



LXT

18V LXT® 3-1/4" Planer  
SKU# MAKXPK01Z



LXT

18V LXT® Oscillating  
Multi-Tool  
SKU# MAKXMT03Z



LXT BRUSHLESS

18V LXT® Brushless Blower  
SKU# MAKXBU03Z



LXT BRUSHLESS

18V LXT® Brushless 4-1/2"  
5" Cutoff/Angle Grinder  
SKU# MAKXAG04Z



XGT

40V MAX XGT® Brushless  
6-1/2" Circular Saw  
AWS® Capable  
SKU# MAKGSH05Z



XGT

40V MAX XGT® Brushless  
4-1/2"/>" Paddle Switch Angle  
Grinder w/Electric Brake  
SKU# MAKGAG03Z



XGT

40V MAX XGT® Brushless  
AVT® Orbital Recipro Saw  
SKU# MAKGRJ02Z



XGT

40V MAX XGT® Brushless  
Blower  
SKU# MAKGBU01Z



3-1/4" Planer, with case  
SKU# MAKKP0800K



7-1/4" Magnesium  
Hypoid Saw  
SKU# MAK5377MG



4-1/2" Cut-Off/  
Angle Grinder  
SKU# MAK9557PBX1



4-1/2" SJS™ Angle Grinder  
SKU# MAK9564CV



LXT BRUSHLESS

18V LXT® Brushless  
2-pc. Combo Kit  
SKU# MAKXT297T



LXT BRUSHLESS

18V LXT® Brushless  
2-pc. Combo Kit  
SKU# MAKXT269M



36V (18V X2) LXT® Brushless  
Rear Handle 7-1/4" Circular  
Saw Kit with 4 Batteries  
SKU# MAKXSR01PT1



LXT BRUSHLESS

18V LXT® Brushless 6-1/2"  
Circular Saw  
SKU# MAKXSH03Z



AVT

AVT® Recipro Saw - 15 Amp.  
SKU# MAKJR3070CT



20 lb. Demolition  
Hammer  
SKU# MAKHM1211B



5" Random Orbit Sander  
with Tool Case  
SKU# MAKBO5030K



1/2" Spade Handle Drill  
SKU# MAKDS4011



# DEMOLITION, NAILERS & SAWS



## DEMOLITION TOOLS



### 1-1/8" Hex Demolition Hammer w/Aluminum Housing Body

- POWERFUL: 10.8 Amp. (1,340 W input) motor.
- 33.2 ft/lbs. of impact energy for heavy-duty demolition.

SKU# HIH65SD3

• \$1,033.89



## PNEUMATIC FRAMING NAILER | CIRCULAR SAW KIT



### 21-Degree Pneumatic Framing Nailer

- Powerful driving with the Metabo HPT® cylinder valve drive mechanism.
- Selectable trigger mode; choose contact or single sequential actuation mode via switch in the trigger.

SKU#HINR83A5

• \$339.95



### 36V Brushless, 7-1/4" Cordless Rear Handle Circular Saw Kit

LIGHTEST IN ITS CLASS:

2 lbs. lighter than the leading rear handle circular saw.

RUNTIME: Up to 500 2x4 cuts per charge.

MOTOR: 5100 RPM no-load speed.

SKU# HIC3607DWAM

• \$345.00

### 36V MultiVolt Portable Rebar Cutter/Bender

FREE POWER TOOLS WITH PURCHASE!

INDUSTRY FIRST: 36V cordless rebar bender and cutter.

DUAL POWER: Power with the MultiVolt battery or MultiVolt AC adapter.

SKU# HIVB3616DAM

• \$2,500.00

7-1/4" Circular Saw Kit  
HIC3607DWAMHammer Drill Kit  
HIDV36DAGMHigh-Torque  
Impact Drill  
HIWR36DAQ4M

Call your local sales representative for pricing.

# REBAR & CARBIDE TIP DRILL BITS



## DUST EXTRACTION HAMMER DRILL BITS



### Rebar Demon™ 4-Cutter Full Carbide Head Dust Extraction Hammer Drill Bits

Amplify concrete drilling with the only hammer drill bits to drill fast, clean holes into clean and reinforced in two easy steps. The elimination of the "Blow-Brush-Blow" cleaning method and the need of rebar cutters is now obsolete, making hole preparation up to 3X faster than current methods resulting in up to 66% labor savings.

SKU# DMAPLA4510



## RECIPROCATING BLADES

Diablo® is changing the game in reciprocating blade performance. From the leading innovation introduced in our industry first carbide-teeth blades for metal cutting to the advancements in bi-metal reciprocating blades, Diablo's carbide & bi-metal reciprocating blade series offers the best solution for all applications.

UP TO  
**50x**  
LONGER LIFELEADING STANDARD  
BI-METAL

50 BLADES

VS

DIABLO  
CARBIDE TIPPED

ONE BLADE

Visit our website [www.rjsconstructionssupply.com](http://www.rjsconstructionssupply.com)



# POWER TOOLS AND ACCESSORIES

## RJ's BONUS PACKS!



# BOSCH

2025 SUMMER/FALL PROMO - WHILE SUPPLIES LAST!



• \$169.99

GET FREE



18V CORE18V® Lithium-Ion  
4 Ah Advanced Power Battery  
**BOSGBA18V40**  
(\$119.00 value)

### 18V Connected-Ready Socket Impact Driver/Wrench Kit

- Delivers 1,860 lbs. of torque.
- Two-in-one 1/4" and 1/2" bit/socket.
- Includes: 1 CORE18V® 8 Ah Advanced Power Battery.

SKU# BOSGDX18V-1860CB15



• \$349.99

GET FREE



18V SDS-plus® Bulldog™  
1" Dust Collection Attachment  
**BOSGDE18V-26DN**  
(\$159.00 value)

### BULLDOG™ EC Brushless SDS-plus® 1" Rotary Hammer Kit

- Lightweight, tool only 5.8lbs.
- Delivers 1.9 ft.-lbs. of impact energy.
- Includes: 2 CORE18V® 8 Ah Advanced Power Batteries.

SKU# BOSGBH18V-26DK25



• \$769.99

GET FREE



18V CORE18V® Lithium-Ion  
12 Ah High Power Battery  
**BOSGBA18V120**  
(\$219.00 value)

### PROFACTOR™ 18V Connected Ready Rotary Hammer Kit

- SDS-max 1-9/16" cordless performance.
- Delivers 5.2 ft.-lbs. of impact energy.
- Includes: 2 CORE18V® 8 Ah Advanced Power Batteries.

SKU# BOSGBH18V-36CK24



• \$565.99

GET FREE



Compact tripod with  
extendable height.  
**BOSBT150**  
(\$79.00 value)

### 12V Max 360° Connected Green-Beam Three Plane Leveling and Alignment-Line Laser Kit

- Ultimate all-in-one leveling and alignment laser - facilitates one-person job setup with dual-power technology.
- Includes: 1 2.0 Ah Battery.

SKU# BOSGLL3-330CG



• \$289.99

GET FREE



18V CORE18V® Lithium-Ion  
8 Ah High Power Battery  
**BOSGBA18V80**  
(\$169.00 value)

### 18V Brushless 4-1/2" - 5" Angle Grinder Kit

- Delivers power equivalent to a 10 Amp. grinder.
- Kickback and drop control.
- Includes: 1 CORE18V® 8 Ah Advanced Power Battery.

SKU# BOSGWS18V-10B14 (slide switch)

SKU# BOSGWS18V/10PB14 (paddle switch)



• \$229.99

GET FREE



18V Starter Kit  
(1) CORE18V® 8 Ah High  
Power Battery and (1) Fast  
Battery Charger  
**BOSGXS18V-12N14**  
(\$199.00 value)

### PROFACTOR™ 18V Blower Kit

- Exceeds 450 CFM with air speed up to 123 MPH for max performance.
- Air speed control wheel.

SKU# BOSGBL18V-450N



CONSTRUCTION PERFORMANCE

# MOISTURE & VAPOR CONTROL

FLASHING & WATERPROOFING



**SubSeal™ 40**  
**Waterproof House Wrap**  
Roll Length: 75 ft.  
Roll Width: 6, 9, 12, 18, 36"  
Roll Coverage: 225 sf. (36")  
Roll Thickness: 40 mil.



**SubSeal™ 60**  
**Waterproofing Membrane**  
Roll Length: 60 ft.  
Roll Width: 37"  
Roll Coverage: 180 sf.  
Roll Thickness: 60 mil.



**FutureFlash®**  
**Waterproofing System**  
Roll Length: 75 ft.  
Roll Width: 6, 9, 12, 18 & 36"  
Roll Coverage: 225 sf. (36")  
Roll Thickness: 25 mil. & 40 mil.



**FutureFlash®**  
**Polyurethane Caulk**  
10 oz. (300 ml) cartridges.  
20 oz. (600 ml) sausages.



Preventing Leaks  
& Squeaks Since 1983

SEALANTS & ADHESIVE PRODUCTS



**RainBuster 415**  
**Self-Adhered Flashing Membrane**  
• Powerful adhesive & durable cross laminated facer.  
• Peel & stick installation.  
• Self-seals around fasteners.  
• Available in 25 mil and 40 mil.  
SKU# TOP4154012



**RainBuster 420**  
**Nail-On Flashing Membrane**  
• Easy, all condition installation.  
• Rubberized asphalt core self-seals around fasteners.  
• Available: 12" x 75', 18" x 75'.  
SKU# TOP4202512  
SKU# TOP4202518



**RainBuster 450 & 900 Sausages**  
• Polycarbonate sealant/adhesive.  
• Best choice for weatherization.  
SKU# TOP450SAUGW  
SKU# TOP900SAUGW



**RainBuster 345**  
**Squeak Eliminating Adhesive**  
• Eliminates squeaks and call backs.  
• Compensates for missed nails and screws.  
• Powerful adhesion to wood/metal.  
• Flexible and strong.  
• Non-shrinking.  
SKU# TOP345WHT  
Color: White



**RainBuster 450 Polyurethane**  
**Window and Door Sealant**  
• Outstanding performance on windows and doors.  
• Permanently flexible; non-shrinking.  
• Adheres to wet surfaces.  
• Lifetime warranty.  
SKU# TOP450WHT  
Color: White



**RainBuster 900 Elastomeric**  
**Window and Door Sealant**  
• Ultimate performance on windows and doors, lath, sheet metal, rain gutters and more.  
• Permanently flexible; non-shrinking.  
• Adheres to wet surfaces.  
• Lifetime warranty.  
SKU# TOP900WHT  
Color: White



VAPOR BARRIERS



**Weather-All Plus Vapor**  
**Barrier**  
• Meets or exceed all ASTM 1745 specifications.  
• Great for new construction.  
10 Mil **VB1014** (14' x 210')  
15 Mil **VB1514** (14' x 140')



**Weather-All Plus Vapor**  
**Barrier Tape**  
Size: 4" x 60 yds.  
• Polyethylene.  
• Designed to seal vapor barrier seams.  
**VBTAPE**



**Visqueen All-Weather**  
**Polyethylene Sheeting**  
Size: 20' x 100', Clear.  
• Damp-proofs site during construction.  
• Medium Duty.  
4 Mil **V420100**  
6 Mil **V620100**  
10 Mil **V1020100**



# CONSTRUCTION PERFORMANCE CONCRETE SOLUTIONS



## GROUTING, PATCHING & RESTORATION



- CG-86 Construction Grout**
- Ready-to-use, water-based.
  - An economical, high strength, non-shrink grout.
  - No site batching required for consistent results.



- 588-10K Non-shrink Grout**
- Construction-grade, high-strength.
  - Resists heat up to 600°
  - Quickly and easily placed by pouring or pumping.



- MEADOW-PLUG**
- Fast setting.
  - Expands as it sets - forms a permanent water stop.
  - Designed to permanently plug non-moving cracks, joints, and voids.



- MEADOW-PATCH 5**
- Fast setting mortar.
  - Highly suitable for precast and cast-in-place concrete patching.
  - May be used as a hydraulic waterstop.



- MEADOW-PATCH 20**
- Fast setting restoration/repair mortar.
  - May be used vertically, horizontally, or overhead.
  - Highly suitable for precast and cast-in-place concrete patching.



- MEADOW-PATCH SMOOTH GRADE**
- Single-component sands-free material for ultra-smooth finish.
  - Polymer-modified/Enhanced bond.

## CONCRETE CURING & SEALING



- VOCOMP-20**
- Ready to use.
  - Cost-effective, non-yellowing UV stability.
  - Low-sheen finish for standard concrete protection.



- VOCOMP-25**
- Ready to use.
  - Water-based formula for easy application.
  - Brighter gloss, improved wear resistance, decorative appeal.



- VOCOMP-30**
- Ready to use.
  - Acrylic resin blend in a water-based system.
  - Highest-gloss finish with maximum long-term protection.



- 1100**
- Forms a premium-grade membrane that retains an optimum amount of water in freshly placed concrete for complete hydration.



- MED-CURE**
- Ready to use.
  - Water-based, VOC compliant.
  - Cures, hardens and dust proofs for lasting concrete performance.



- DECK-O-SHIELD**
- Ready-to-use, water-based sealer.
  - Use for natural stone, concrete, and masonry surfaces.
  - Recommended for pools and walkways.



- FORM OIL**
- Cost-effective solution to substantially reduce the potential creation of bug holes and maximize concrete coverage when properly applied.

## EXPANSION JOINTS & UNDERLAYMENT



- DECK-O-FOAM**
- Expansion joint filler made of light-weight, non-staining polyethylene.



- SNAP-CAP**
- Forms straight, uniform, and debris-free joints. Ready to seal.



- SPEED-E-JOINT**
- Two solid pre-assembled pieces for easy handling and installation.



- RED ROSIN PAPER**
- A high-quality, single-ply sheathing multi-purpose building paper.



## THERMAL & MOISTURE PROTECTION



- MEL-PRIME W/B**
- Water-based primer.
  - Ready to use.
  - Dries to transparent finish with reddish sheen.



- MEL-ROL LM**
- Waterproof liquid water proofing membrane.
  - Superior elongation bridges minor cracks.
  - Quick drying.



- POINTING MASTIC**
- Cold-applied polymetric sealing compound.
  - Designed to seal all exterior, vertical, and horizontal terminations.



- MEL-DRAIN 5012**
- Allows the passage of moisture through the fabric while preventing fine soils from entering.



- MEL-ROL**
- Cost-effective waterproofing.
  - Protection against damaging moisture migration.
  - Easy-to-apply system for maximum productivity.



- CLAY-TITE**
- Dual waterproofing with positive puncturing protection.



- Perminator® Underslab Vapor Barrier**
- Helps reduce the penetration of moisture and water vapor.
  - Effective, economical choice.
  - 10 and 15 mil.



- Perminator® Underslab Vapor Barrier Tape**
- A self-adhesive tape, used in conjunction with the application of PERMINATOR® underslab vapor barrier.



- VAPOR STAKES**
- Used with vapor retarder and mastic to secure interior forms, screeds, or shear wall templates without puncturing the vapor barrier.



- SEALMASTIC**
- Solvent-based dampproofing.
  - Recommended to protect porous or irregular surfaces.
  - Designed to protect exterior below-grade masonry walls.



- HYDRALASTIC 836 SL**
- Cold-applied waterproofing membrane.
  - Can be applied to green concrete.
  - Fast curing at 75°F (23°C)
  - No dust pick-up.
  - Easy self-leveling application.

### BEM

- A high quality moisture-curing elastomeric sealing material.
- Bonds to asphalt and concrete.
- Solvent-free, will not shrink.



## SPECIALTY CONSTRUCTION SEALANTS



- DECK-O-SEAL Gun Grade**
- Used for general purpose caulking, glazing, weather-proofing, and curtain wall and joint sealing.



- DECK-O-SEAL One Step**
- Used for caulking joints in structures that are subject to movement caused by temperature changes.



- HS-1 SL**
- Self-leveling hybrid sealant, with excellent adhesive properties and resistance to aging and weathering.



- DECK-O-SHIELD 150**
- Two-part, pourable joint sealant curing into firm, flexible rubber. Available in Gray and Tan.



# INDUSTRIAL EQUIPMENT AND SUPPLIES

## COMPACTORS, RAMMERS & PUMPS



### COMPACTORS & RAMMERS



#### MQ Mikasa Plate Compactor

Honda GX160, 3,372 cf,  
19.7" single-cast baseplate.

SKU# MVC88VTHW



#### MQ Mikasa Rammer

Honda GX100 Engine, 3,350 lb.  
impact force, 11.2" shoe.

SKU# MTX70HD



### DEWATERING PUMPS



#### 3" Honda Motor Trash Pump

396 Gallons-Per-Minute.  
Horsepower: 7.9 HP.  
Engine: Gasoline.

SKU# QP-3TH

• \$1,415.99



#### 1 HP Submersible Pump with Float

79 Gallons-Per-Minute.  
Horsepower: 1.0 HP.  
Engine: Electric.

SKU# ST2040TH

• \$376.99



#### 1 HP Submersible Centrifugal Pump

73 Gallons-Per-Minute.  
Horsepower: 1.0 HP.  
Engine: Electric.

SKU# ST2037

• \$310.99



#### 1/4 HP Submersible Centrifugal Pump

27 Gallons-Per-Minute.  
Horsepower: .25 HP.  
Engine: Electric.

SKU# ST1/ST1F

• \$97.99 ST1  
• \$110.99 ST1F



### DETECTABLE WARNING SURFACES

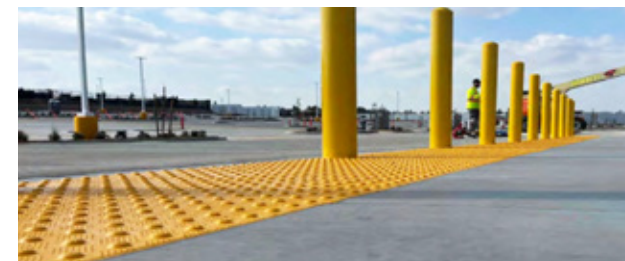
NEW AT RJ's!

## Durable and UV-stable fiberglass polymer composite detectable warning surface tiles.

These products adhere to the standards outlined by the Americans with Disabilities Act of 1992, and California Title 24.



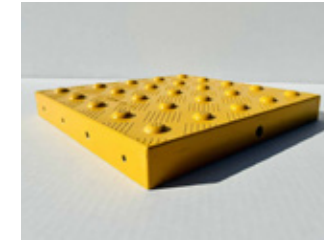
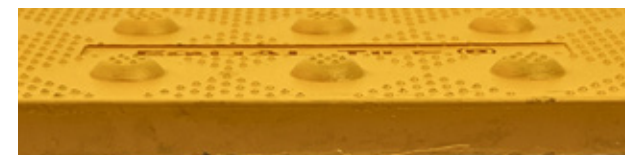
Cast-In-Place.



Low profile.



Surface mount.



EQ-3X4-BOX  
FEDERAL YELLOW

#### Cast-In-Place (Paver)

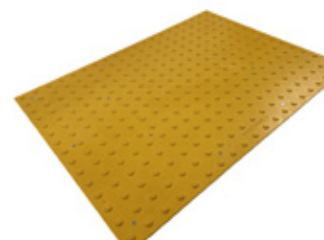
The Cast-in-Place Paver panel is crafted from a durable, homogenous glass, carbon, and fiberglass reinforced composite material. The thick, heavy panel and sturdy embedment ribs ensure a strong bond and superior structural support. It's an excellent long-term solution for any project or climate.



EQ-3X4-CAST  
FEDERAL YELLOW

#### Cast-In-Place (Replaceable)

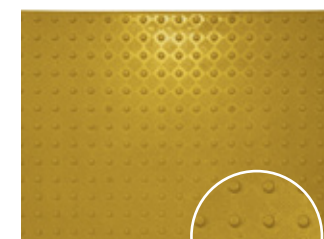
Cast-in-Place (Replaceable) Tiles are designed to combine the durability of cast-in-place installations with the flexibility of replaceable components. These tiles offer a seamless, sturdy surface that can be easily replaced when needed, ensuring long-lasting functionality and aesthetic appeal.



EQ-3X4-BUILT  
FEDERAL YELLOW

#### Low Profile

The Low Profile panel offers a modern, minimalist aesthetic that seamlessly integrates with various design schemes. Its reinforced construction and secure bonding ribs ensure lasting stability.



EQ-3X4-SM  
FEDERAL YELLOW

#### Surface Mount (Retro)

Designed for easy installation over existing surfaces, these tiles are perfect for quick renovations and updates. The retro design adds a touch of nostalgic elegance, while the robust construction ensures long-lasting performance. Ideal for both residential and commercial applications.



FASTENERS AND ANCHORS

# SIMPSON STRONG-TIE

**SIMPSON**  
**Strong-Tie**

**Certified Supplier Advantage - Local & Reliable - Built for Contractors**

As a Certified Simpson Strong-Tie Supplier, we provide contractors with reliable local availability and quick access to the full catalog of products, ensuring the right solution is always within reach.

**Joist Hangers** *Secures connections for wood framing in residential and commercial builds.*



**U Face-Mount**  
Designed for joist-to-header installation in wood-framed construction.  
**SKU# SIMU**



**HUC Heavy Concealed-Flange Face-Mount**  
Designed for structures requiring additional strength and safety factors.  
**SKU# SIMHUC**



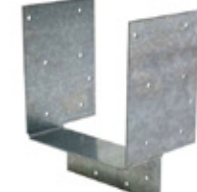
**LU Light Face-Mount**  
Designed for joist-to-header installation in wood-framed construction.  
**SKU# SIMLU**



**HU Heavy Face-Mount**  
Designed for structures requiring additional strength and safety factors.  
**SKU# SIMHU**



**HUCQ Heavy Concealed Flange Face-Mount**  
Designed for structures requiring additional strength and safety factors.  
**SKU# SIMHUCQ**



**HH Headed Hanger**  
For fast, accurate installation of door and window headers and other cross members.  
**SKU# SIMHH**



**HTU Face-Mount Truss Hanger**  
Full allowable loads (with minimum nailing) apply to heel heights as low as 3 7/8".  
**SKU# SIMHTU**



**MBHU Masonry Beam Face-Mount Hanger**  
Provides a face-mounted solution for connecting beams to masonry or concrete walls.  
**SKU# SIMMBHU**



**LB Light Bent Hanger**  
A cost-effective top-flange hanger for solid-sawn lumber applications.  
**SKU# SIMLB**



**LSSJ™ Face-Mount Adjustable Jack Hanger**  
Connecting jack rafters to hip members. Installs from one side with all fastener holes accessible.  
**SKU# SIMLSSJ**

**Column Bases** *Provides solid support and uplift resistance for posts in contact with concrete.*



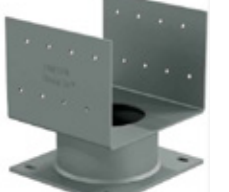
**CDSQ Column Base Quick-Install**  
Designed to be the interface between columns and their foundations.  
**SKU# SIMCDSQ**



**CBSTQ Column Base Quick-Install**  
Engineered to support wood posts in residential and light commercial construction.  
**SKU# SIMCBSTQ**



**CBST™ Column Base**  
Designed to connect wood posts to concrete securely. Ideal for residential and light commercial construction.  
**SKU# SIMCBST**



**ECB™ Elevated Column Base**  
Elevated base accommodates moisture barrier and surface material while still providing 1" standoff  
**SKU# SIMECB**



**CB Column Base**  
Designed to connect posts to concrete foundations for a wide range of lumber, glulam, and engineered wood product sizes.  
**SKU# SIMCB**

FASTENERS AND ANCHORS

# SIMPSON STRONG-TIE

**Anchor Bolts** *Secures structural connections to concrete for hold-down and shear resistance.*



**PAB™ Pre-Assembled Anchor Bolt**  
For high-tension-load applications like rod systems and shearwalls.  
**SKU# SIMPAB**



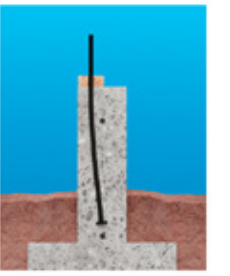
**SB Anchor Bolt**  
For our holdowns that call for a 5/8", 7/8", and 1" diameter anchor.  
**SKU# SIMSB**



**Strong-Bolt® 2 Wedge Anchor**  
An optimal choice for high performance even in seismic and high-wind conditions  
**SKU# SIMSTB**



**SSTB® Anchor Bolt**  
Designed for maximum performance as an anchor bolt for holdowns and Strong-Wall® shearwalls.  
**SKU# SIMSSTB**



**SABR™ Anchor Bolt**  
CIP single anchor solution for all foundation types, one-piece design eliminates potential loss of components.  
**SKU# SIMSABR**

**Titen® Screws** *High-strength concrete and masonry fasteners for quick and secure anchoring.*



**Titen® Stainless-Steel Concrete and Masonry Screws**  
Ideal for attaching various types of components to concrete and masonry  
**SKU# SIMTTNSS**



**Titen Turbo™ Concrete and Masonry Screw Anchor**  
Innovative Torque Reduction Channel to trap drilling dust to reduce binding.  
**SKU# SIMTNT**



**Titen HD® Stainless-Steel Heavy-Duty Screw Anchor**  
For use in cracked and uncracked concrete, as well as uncracked masonry.  
**SKU# SIMTHDSS**



**Titen HD® Galvanized Heavy-Duty Screw Anchor**  
Serrated teeth on the tip facilitates cutting reducing installation torque.  
**SKU# SIMTHDMG**



**Titen HD® Countersunk Head Style**  
Qualified for static, wind and seismic loading conditions.  
**SKU# SIMTHDCS**

**Connectors** *Secure fastening, load distribution, and enhanced anchorage.*



**Hex Nut**  
Comes in a variety of standard sizes to fit from 1/2" up to 1-1/4" rod diameters.  
**SKU# SIMNUT**



**Hex Head Washer**  
Design provides an easier and significantly faster installation time compared to through-bolting.  
**SKU# SIMSTN**



**Bearing Plate**  
Designed to give a greater bearing surface than standard cut-washers.  
**SKU# SIMBP**



**BPS Bearing Plate with Slotted Hole**  
Slotted hole for adjustability, design provides a greater bearing surface.  
**SKU# SIMBPS**



**LBP Light Bearing Plate**  
Features a galvanized finish, helps distribute the load at critical connections.  
**SKU# SIMLBP**



**Special Products in Regular Stock**

**ECCQ™ End Column Cap, Quick-Install**  
A strong column-beam connections in end-of-beam applications in wood construction  
**SKU# SIMECCQ**



**ECCL End Column Cap (L-Shaped)**  
Column caps provide a right connection between (2) 4x beams & (1) 4 x 4 posts when both beams end at the post.  
**SKU# SIMECCL**



# SAFETY AND PROTECTIVE EQUIPMENT

## LADDERS & SCAFFOLDING

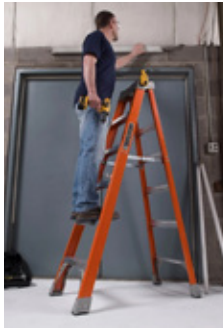


### FIBERGLASS STEP LADDERS, TYPE IA, 300-POUND LOAD CAPACITY

#### Standard Ladders

Non-conductive fiberglass step ladders meets or exceeds the safety standards set by ANSI and OSHA.

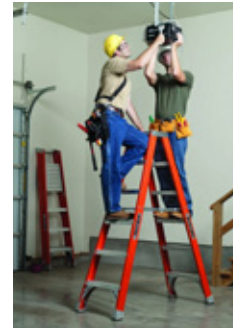
4 ft. **LOFS1504**  
6 ft. **LOFS1506**  
8 ft. **LOFS1508**  
10 ft. **LOFS1510**



#### Twin Front Ladders

Twin front step ladders allow two users to work on the same ladder simultaneously to easily complete a project.

4 ft. **LOFM1504**  
6 ft. **LOFM1506**  
8 ft. **LOFM1508**  
10 ft. **LOFM1510**



#### Cross Step Ladders

Converts from a step ladder into a leaning shelf ladder to get closer to the work area.

4 ft. **LOFXS1504**  
6 ft. **LOFXS1506**  
8 ft. **LOFXS1508**  
10 ft. **LOFXS1510**  
12 ft. **LOFXS1512**



#### Extension Ladders

Features outside slide guides, D-shaped rungs fully serrated for a slip-resistant surface, non-marring rail end & steel swivel safety shoes.

16 ft. **LOFE3216**  
24 ft. **LOFE3224**



### FIBERGLASS LADDERS, 300-POUND LOAD CAPACITY

#### Single-Step and Double Step Ladders

- Type 1A.
- Steel top plates.
- Orange side rails.
- All steel rivet construction.
- Heavy-duty steel brace.



4 ft. **SUNFD1A04-C**  
6 ft. **SUNFD1A06-C**  
8 ft. **SUNFD1A08-C**  
8 ft. **SUNFD1A08-C**  
10 ft. **SUNFD1A10-C**

#### Extension Ladders

- "D" shaped rungs.
- Orange side rails.
- Steel swivel shoes.
- Heavy-duty steel braces.

16 ft. **SUNFE1A16-C**  
24 ft. **SUNFE1A24-C**



#### 6' Multi-Use Scaffolding

- 1,000 lb. load capacity.
  - Meets OSHA and ANSI regulations.
  - Platform adjusts in 2" increments.
- SKU# SUNUS06**



**Angelus**  
BLOCK CO., INC.  
Since 1946

#### Permeable Paving Stones

Angelus permeable pavers are an excellent choice for areas where reducing stormwater runoff is a priority. They allow water to naturally percolate back into the ground, promoting groundwater regeneration, controlling erosion, and improving stormwater quality.

Angelus pavers meet ADA requirements, making them suitable for a variety of applications, and are eligible for LEED® credits under the U.S. Green Building Council guidelines supporting sustainable design.

**ATTRACTIVE,  
DURABLE &  
ENVIRONMENTALLY  
COMPLIANT.**

Call your local sales representative for pricing.



# CONSTRUCTION MATERIALS

## PLYWOOD, LUMBER & NAILS



### CONSTRUCTION-GRADE LUMBER & PLYWOOD

**CDX plywood** has a rough, unsanded surface with a C-grade face and D-grade back, using an exterior-grade glue (the "X") for moderate moisture resistance, making it suitable for structural sheathing and low-cost applications where appearance does not matter.



#### 3/4" & 5/8" Plywood

MDO 3/4" x 4' x 8' **SKU# LUM34X4X8MDO**  
 CDX 3/4" x 4' x 8' **SKU# LUM34X4X8CDX**  
 CDX 5/8" x 4' x 8' **SKU# LUM58X4X8CDX**

**MDO plywood** features a smooth, durable, resin-coated fiber overlay on both sides, providing a superior surface for painting, excellent moisture resistance, and high durability for applications like highway signs, formwork, and painted architectural finishes.



#### Dimensional Lumber

2" x 4" x 20" **SKU# LUM2X4X20**  
 2" x 6" x 20" **SKU# LUM2X6X20**  
 2" x 12" x 20" **SKU# LUM2X12X20**



#### Wood Stakes

1" x 3" x 12" **SKU# MWS1312-50**  
 1" x 3" x 18" **SKU# MWS1318-50**  
 1" x 3" x 24" **SKU# MWS1324-50**  
 1" x 3" x 36" **SKU# MWS1336-50**  
 1" x 3" x 48" **SKU# MWS1348-50**



### CONSTRUCTION-GRADE NAILS & FASTENERS



#### 2-3/8" x .148" - 10D - 21° Smooth Shank

- Vinyl-coated smooth shank, full round head, plastic-collated strip nails (non-galvanized).
- 10D "Framer" - designed for fast, easy driving in framing applications.

**SKU# HOB23148**



#### 2-3/8" x .148" - 21° Ring Shank

- Vinyl-coated ring shank, full round head, plastic-collated strip nails.
- Approx. 4,000 nails per 50 lb box.

**SKU# HOR23148**



#### 2-1/2" x .131" - 21° Hot Dip Galvanized

- Galvanized smooth shank, full round head, plastic-collated strip nails.
- Approx. 5,000 nails per 50 lb box.

**SKU# HDB24131**



#### 3-1/4" x .131" - 21° Hot Dip Galvanized

- Galvanized smooth shank, full round head, plastic-collated strip nails.
- Approx. 4,000 nails per 50 lb box.

**SKU# HDB32131**



#### 40D Bright Steel Smooth Shank Common Nails

- Smooth shank design for general carpentry, framing, and construction.
- Larger shank diameter for added strength and resistance to bending.

**SKU# NCM40**



#### 1-1/2" x .131" Positive Placement Joist Hanger Nails

- 33° bright nails, paper-tape collated for positive placement tools.
- Not recommended for use with ACQ-treated lumber.

**SKU# KXB14131H**



### CONCRETE & MORTAR



#### High-Strength Concrete Mix

- Stock: 90 lb. bag**
- 4500 PSI.
  - Foot traffic in 24 hours, vehicle traffic in 72 hours.
  - PMP® Spec Concrete Mix 4500 PSI is a high strength concrete mix ideal for both structural and non-structural applications such as foundation walls, sidewalks, footing, patios, and driveways.



#### Concrete and Mortar Mix

**CONCRETE MIX:** Workable, high quality concrete repair and concrete restoration material. Sets in 15 minutes, 1 hour traffic-ready.



**CEMENT ALL:** A versatile, fast setting mortar and non-shrink grout. Sets in 15 minutes, 1 hour dry time.



**MORTAR MIX:** High-strength structural repair mortar. Crack-resistant for multi-surface repairs. 1 hour traffic ready. 6500 PSI in 28 days.

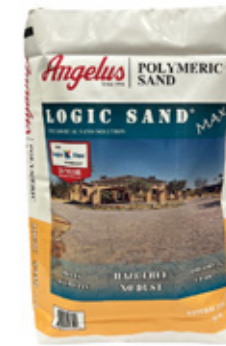


### BUILDER SAND



#### Silica Sand/Silver Sand

- Stock: 100 lb. bag**
- #30, #20, #16 sieve ratings
- Silica sand provides a consistent and uniform mix.
  - Environmentally-friendly sand is odorless and chemical-free.
  - Ideal for landscaping, gardening, and cement mixers.



#### Angelus Polymeric Sand

- Stock: 50 lb. bag**
- Logic Sand Max® Polymeric Sand is produced using a refined manufacturing process for consistent quality. This specially calibrated sand is blended with polymeric binders that flow smoothly into joints, ensuring fast, reliable installation of pavers or slabs with false or wide joints.



#### Spec Mix Pre-Blended Dry Mortar

- Stock: 60 lbs. & 90 lbs. bag**
- Used in brick, block, and stone applications.
  - Factory-blended for consistency.
  - Meets ASTM C270 standards.
  - 120 min. working time.
  - 1,800 PSI.

### STUCCO



#### LaHabra Stucco

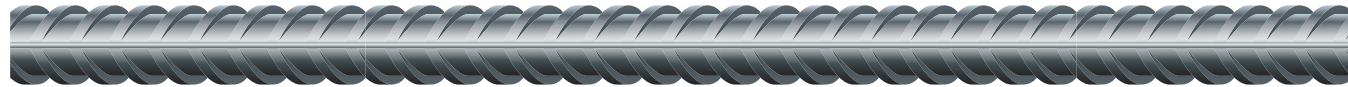
- Stock: 90 lb. bag**
- Base 100 & 200
- High-quality stucco for enhanced durability.
  - Resists termites, rotting, and fungus for long-term use.
  - Ensures superior fire protection for added safety.



# CONSTRUCTION MATERIALS REBAR AND FABRICATION



## REBAR IN STOCK



#8-60D



#7-60D



#5 & 6-60D



#4-40D / 4-60D



#3-40D



## FABRICATION OPTIONS

Call us today for Caissons, Rebar Rings, L-Bars, Sure-Tie and J-Hooks.



# One Call, On-Time Delivery!

Fast, Local Jobsite Delivery Across Southern California.



Get your items delivered straight to your Jobsite with just one call. Our delivery service saves you time, energy, and hassle—so you can focus on the work that matters. Enjoy the convenience and flexibility of having everything you need, when you need it.



**LAWNDALE**  
(310) 973-2018

**CANOGA PARK**  
(818) 704-4888

**RIVERSIDE**  
(951) 631-3200





# BUILD PRO

LET'S BUILD!

[www.rjsconstructionsupply.com](http://www.rjsconstructionsupply.com)



## Rebar Fabrication

Our conveniently located facilities handle large orders quickly, reducing waste and saving you time and money. Whether straight, bent, cut, shaped, or custom, we fabricate rebar to your exact specifications.

## Jobsite Delivery

Our same-day and next-day delivery services ensure your project stays on track. Simply place your order and let us know when and where you need it – we'll handle the rest.

## Request a Quote

Save time and get the pricing you need. We understand every project is unique, so we provide customized quotes to meet your specific requirements.

[www.rjsconstructionsupply.com/Quote](http://www.rjsconstructionsupply.com/Quote)

**WE'RE HIRING**

**JOIN THE TEAM!  
CLASS A&B  
DRIVERS**

**(310) 973-2018 EXT 237**



4505 Manhattan Beach Blvd., Lawndale, CA 90260

7701 Canoga Ave., Canoga Park, CA 91304

1781 3rd St., Riverside, CA 92507

**Serving professional builders since 2009**

Prices are subject to change without notice. Promotional period through 11/30/25 unless otherwise noted, subject to availability.

